

**EXPRESS  
LANES**

*Less Stop More Go*



**95 EXPRESS**

# Travel Choices and Strategies to Relieve Congestion

Presentation to  
**City of Aventura Council**

May 2008  
Debora M. Rivera, P.E.



**EXPRESS  
LANES**

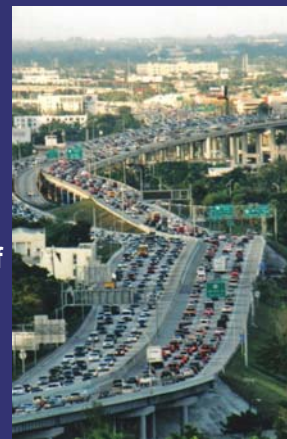
*Less Stop More Go*



**95 EXPRESS**

## *What's the Problem?*

- South Florida has among the worst traffic congestion in the Nation
- Longer commute times, Lower operating speeds, Less trip reliability
- From 2000 to 2030, population increase of 45% and travel speeds decrease by 25%
- In 2005, 50 hours of delay per year
- Traditional Solutions have Focused on Increasing Transportation "Supply"



**EXPRESS LANES**

*Less Stop More Go*

↓ ↓



**95 EXPRESS**

### *The Solution*

- **Miami Urban Partnership**
  - USDOT Congestion Management Grant using 4Ts
- **Multimodal, Demand Management Project**
  - Express Lanes with Congestion Pricing
    - Reduce, Combine, Shift or Eliminate Trips
    - Regulate Traffic Flow
  - Bus Rapid Transit
    - Carpools, Vanpools
    - Convenient and Reliable Transit
  - Along With Other Complementary Strategies









**EXPRESS LANES**

*Less Stop More Go*

↓ ↓

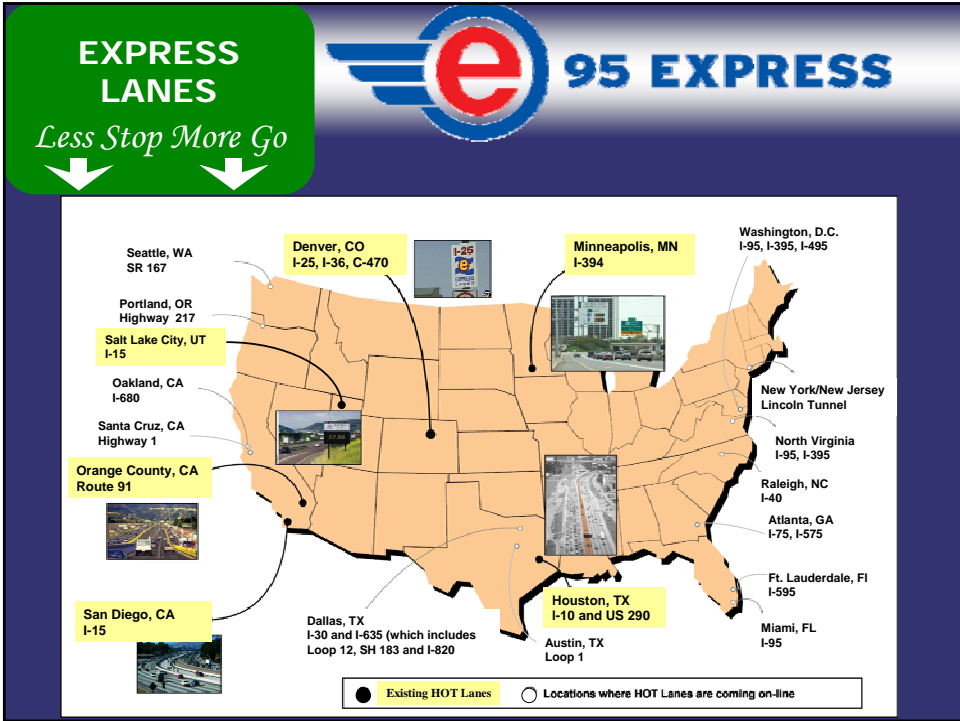


**95 EXPRESS**

### *Express Lanes*

- **What are They and Where Else are They Used?**
  - Physically separated with controlled points of access
  - Tolls to manage demand
    - Static, Variable or Traffic-Responsive
  - Improve operating speeds
  - Restrictions and incentives
    - Trucks
    - Transit or Ride-sharing
  - Offer a Reliable Alternative
    - Choice
    - Value





**EXPRESS LANES**  
*Less Stop More Go*

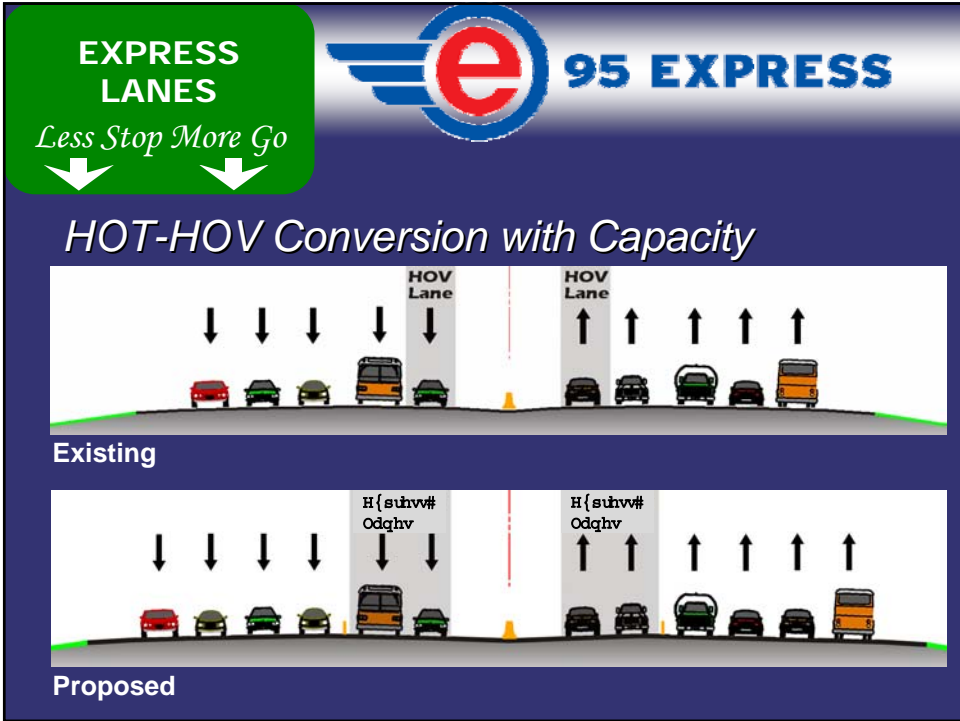
**95 EXPRESS**

### Project Scope

- 21 miles from Miami to Ft. Lauderdale
- HOT conversion of 2 HOV lanes plus 2 new express lanes
  - Extend HOV lanes south of SR 112
- Congestion based Toll-pricing strategy
  - When you use
  - How long you use
- Bus Rapid Transit
- Registered 3+ carpools
  - South Florida Commuter Services

PROJECT LIMITS

Potential Access Points to Express Lanes



**EXPRESS LANES**

*Less Stop More Go*



95 EXPRESS

### How Will it Work?

- **Express Lanes Separated by Flexible Posts**
- **Tolls for Paying Customer**
  - Rates based on Congestion or Demand
  - Rates Displayed before Express Lanes
  - Electronic Toll Collection with SunPass
- **“Free” Users will be Tag Verified**
- **Heavy FHP Presence with Citations Issued**
  - Carpools with less than 3
  - Trucks



SUNPASS
ONLY

EXPRESS LANES ENTRANCE

ONLY

REGISTERED CARPOOLS FREE

SUNPASS
ONLY

TO 826
\$ 2.00

TO 95
CLOSED

CASH NOT ACCEPTED

## EXPRESS LANES

*Less Stop More Go*



# 95 EXPRESS

### Why Use Tolls?

- **Tolls are Used to**
  - Regulate and Manage Demand
  - Optimize Traffic Flow
  - Encourage More Efficient Use
- **Tolls Pay for**
  - Road Rangers and Troopers
  - Increased Highway and Transit O&M
  - Other MPO Priorities
- **Tolls will Vary with Congestion**
  - Highest During Peak Periods



1-800-234-RIDE

## EXPRESS LANES

*Less Stop More Go*



# 95 EXPRESS

### Bus Rapid Transit

- **Eliminate County Line Transfer**
- **Expand or Extend Transit Service**
  - Miami-Dade 95 Express Bus Service
  - Broward US 441 & University Drive with Bus Service into Miami-Dade
  - Additional Future Routes and Route Extensions



## EXPRESS LANES

*Less Stop More Go*



## 95 EXPRESS

### Implementation Schedule

- **Phase 1A**
  - Northbound from SR 112 to Golden Glades Interchange (GGI)
  - Summer 2008
- **Phase 1B**
  - Southbound from GGI to SR 112
  - Northbound and Southbound between SR 112 and SR 836
  - Fall 2009
- **Phase 2**
  - GGI to I-595
  - Winter 2010



## EXPRESS LANES

*Less Stop More Go*



## 95 EXPRESS

### Project Benefits

- **50% Travel Time Reduction in Express Lanes from Golden Glades Interchange to SR 112**
- **Transit Transfer Delay Eliminated at Golden Glades Interchange**
- **Offers Benefits Traditional Widening Projects Can Not**
  - Encourages Ride-sharing
  - Provides Incentives for Transit Use
  - Implements Demand Management, thus Encouraging Travel During Non-peak Periods
  - Reduces or Eliminates Trips



## EXPRESS LANES

*Less Stop More Go*



### *Complementary Strategies*

- **Traveler Information Service – 511 before you Go**
  - Highway and Transit Information
- **Rapid Incident Detection and Response**
  - Closed Circuit TVs
  - Road Ranger Service Patrols
  - Troopers
- **Dynamic Message Signs**
- **Ramp Signaling**



## EXPRESS LANES

*Less Stop More Go*



### *Ramp Signaling*

- **Red/Green Signals at Selected On-Ramps**
- **Regulates the Rate Vehicles Merge onto the Expressway**
- **Benefits Include**
  - Reduced Congestion and Travel Time
  - Maintain Consistent Traffic Flow
  - Improved Trip Predictability
  - Reduced Rear-end and Side-swipe Accidents



**EXPRESS  
LANES**

*Less Stop More Go*



**95 EXPRESS**

## 95 Express

### A Multimodal, Demand Management Approach to Congestion Relief

- Better Alternative to Traditional Widening
- New and Better Travel Choices
- Improved Operations
- Reliability and Travel Time Savings

**EXPRESS  
LANES**

*Less Stop More Go*



**95 EXPRESS**

**For More Information Please  
Visit or Call**

[www.95express.com](http://www.95express.com)

**1(877)95X-FDOT**

